

See separate specs (for full page only)

SMOKEY JOE'S CAFE

SEP 10-22, 2019

Circulation: 15,000
Ads Due: 8/20

THE NEW ONE

OCT 17-19, 2019

Circulation: 16,000
Ads Due: 9/17

MUSIC & MOVEMENT SERIES

OCT 25, 2019 – MAR 20, 2020

ROOTED, 10/25/19

Caravan, 10/26/19

Ragamala Dance Company, 2/15/20

HERbeat, 2/29/20

Les Ballets Trockadero de Monte Carlo, 3/11/20

Danú, 3/20/20

Circulation: 25,000

Ads Due: 9/18

SIX

NOV 29-DEC 22, 2019

Circulation: 50,000
Ads Due: 11/08

ONCE ON THIS ISLAND

FEB 4-9, 2020

Circulation: 15,000
Ads Due: 1/14

THE COLOR PURPLE

MAR 31-APR 5, 2020

Circulation: 20,000
Ads Due: 3/10

STING STARRING IN THE LAST SHIP

APRIL 8-19, 2020

Circulation: 20,000
Ads Due: 3/18

GROUNDHOG DAY

JUL 21-AUG 9, 2020

Circulation: 30,000
Ads Due: 6/30

*Final circulation numbers determined at press time.
All rates are net, agencies add 15%*

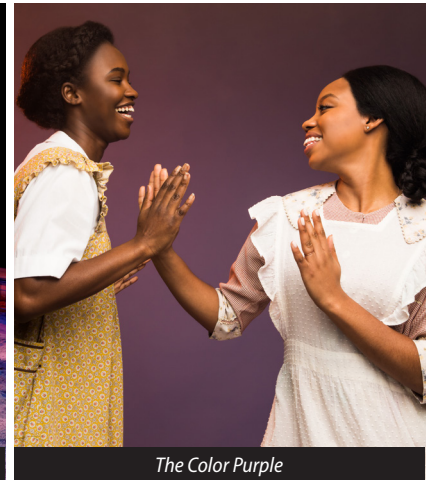
- HOLIDAY PROGRAM
- TOURING PERFORMANCE
- INDIVIDUAL PROGRAM
- MUSIC & MOVEMENT SERIES



Six



Once On This Island



The Color Purple

ORDWAY 2019-2020

BROADWAY SERIES

Advertising Rates* + Mechanical Requirements

Individual Programs + Touring Performances + Music & Movement Series	4-C
Back Cover	\$1,650
Inside Cover (front or back) or pg. 3	\$1,400
Full Page	\$1,200
1/2 Page (vertical or horizontal)	\$850
1/4 Page	\$650

Six	4-C
Back Cover	\$3,300
Inside Cover (front or back) or Pg. 3	\$2,900
Full Page	\$2,500
1/2 Page (vertical or horizontal)	\$1,900
1/4 Page	\$1,300

*Discounted pricing available for multiple program insertions in this and in combination with our other programs. See below.

FULL PAGE (TWO OPTIONS)

1 without bleed

4.5" w x 7.5" h

2 with bleed

trim size

5.375" w x 8.5" h

+ .125" bleed on all sides =

5.625" w x 8.75" h

safety/live area

0.25" from trim edges

1/4

2.188"

x

3.688"

1/2 H

4.5" x 3.688"

1/2 v

2.188"

x

7.5"

Music & Movement Series full pg specs:

FULL PAGE (TWO OPTIONS)

1 without bleed

4.5" w x 7.5" h

2 with bleed

trim size

5.5" w x 8.5" h

+ .125" bleed on all sides =

5.75" w x 8.75" h

safety/live area

0.25" from trim edges



REPRESENTING: ORDWAY • MINNESOTA OPERA • SCHUBERT CLUB • CHANHASSEN DINNER THEATRES • ARTISTRY CANTUS • CHILDREN'S THEATRE COMPANY • THE COWLES CENTER • MINNESOTA BOYCHOIR • MINNETONKA THEATRE + MORE!

To reserve your space: mary-kate@artsink.org • artsink.org • 763.568.5218

For artwork specifications + submission guidelines: design@artsink.org • artsink.org • 612.791.3629